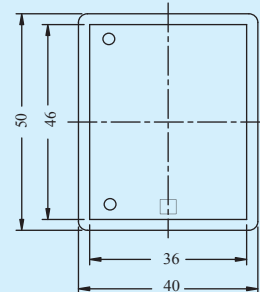
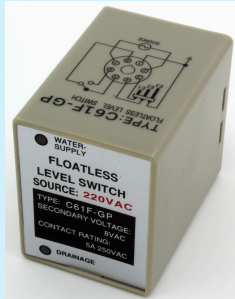


## FLOATLESS RELAY 液面控制器

### C61F-GP

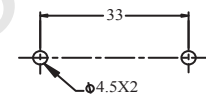
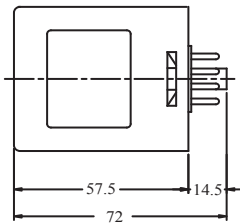
DIMENSIONS(mm)  
尺寸

50H×40W×57.5D



SOCKET TYPE  
底座型號

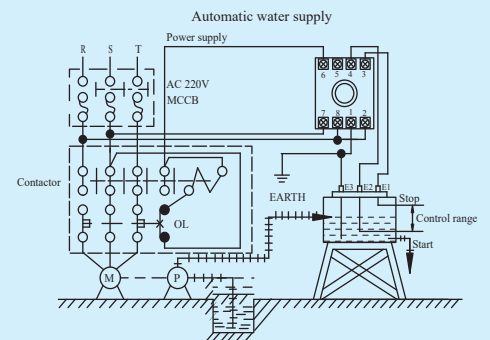
PF085A



RATED VOLTAGE 額定電壓	AC: 110V, 220V, 240V, 380V, 415V, 440V, 50/60Hz	
INDICATOR OPERATING 指示燈動作	Two LED'S use for two status 兩只LED燈作狀況指示	
OPERATING VOLTAGE 動作電壓	85~110% of rated voltage 額定電壓值的85~110%	
SECOND VOLTAGE 電極內電壓	8VAC(except HIGH SENSING 24VAC)	
OPERATE RESISTANCE 動作電阻	4KΩ min.(GENERAL)	
RELEASE RESISTANCE 釋放電阻	15KΩ min.(GENERAL)	
RESPONSE TIME 反應時間	Operate: 80 msec max .Release:160 msec max. 動作: 80msec 以下,釋放: 160msec以下	
CONTACT RATING 接點容量 1C	5A,250VAC(resistive load)	
LENGTH OF CABLE 電纜長度	1Km max, (GENERAL)	
L I F E 壽命	MECHANICAL 機械	5×10 <sup>6</sup> times min
	ELECTRICAL 電氣	10 <sup>5</sup> times min
INSULATION RESISTANCE 絕緣電阻	100MΩ (DC 500V) min.	
DIELECTRIC STRENGTH 耐電壓	1500VAC, 50/60Hz, for 1 minute	
CONSUMED POWER 消耗功率	3.2VA	
AMBIENT TEMPERATURE 使用周圍溫度	-10℃~+55℃	
AMBIENT HUMIDITY 使用周圍濕度	45~85%RH	
WEIGHT 重量	160g	

### C61F-GP

General Water-Supply  
Running  
一般自動給水裝置



General Drainage  
Running  
一般排水裝置

